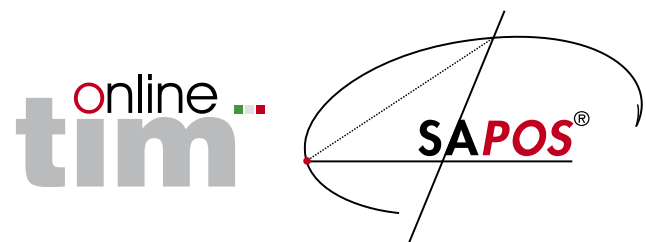


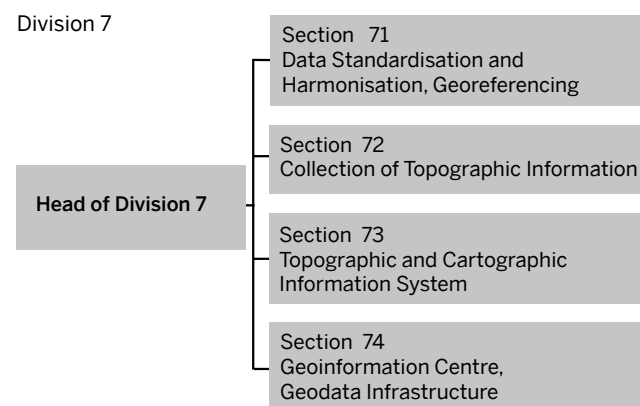
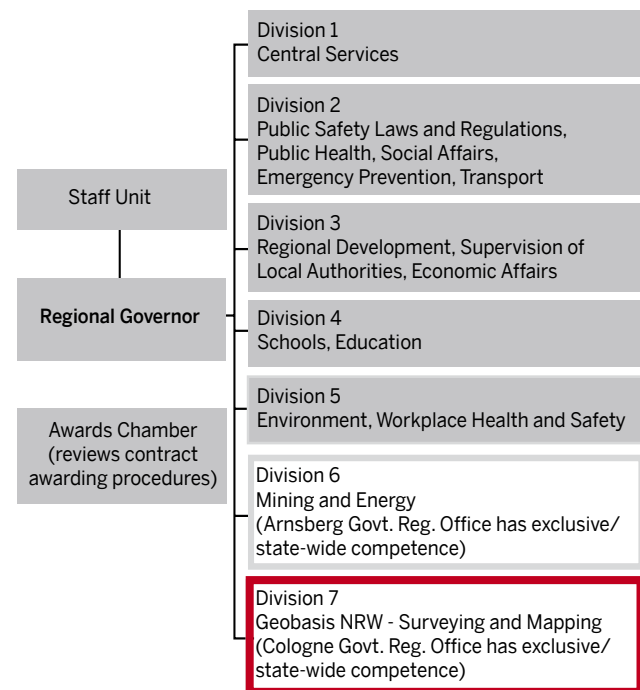
## Geo-Products for Everybody – Ensuring Uniformity Throughout the State

Division 7 also comprises the Geoinformation Centre whose remit includes licensing and offering advice to users of basic geographic data of the real estate cadastre. The Centre makes available to users cadastral information covering the entire territory of the State of North Rhine-Westphalia.

In addition, the division hosts the Secretariat of the state's Interdepartmental Geodata Infrastructure Committee (IMA-GDI) which co-ordinates the development of the geodata infrastructure in North Rhine-Westphalia and the INSPIRE processes (INSPIRE stands for Infrastructure for Spatial Information in Europe).



## Organisational Chart



## We are there to help you

Providing basic geographic information is a government responsibility given that geodata form part of a state's infrastructure. Division 7 of the Cologne Government Regional Office is North Rhine-Westphalia's central service for basic geographic data and top-quality geo-products and services. Division 7 has state-wide responsibility for collecting, storing, handling and making available basic topographic geodata. This makes the Bonn-Bad Godesberg-based service the first port of call for prospective users of geoinformation and services from North Rhine-Westphalia.

Are you interested to learn more about the work of the Cologne Government Regional Office? We will be happy to send you more detailed information – just give us a call or email us:

Press officer: Oliver Moritz  
phone: + 49 221 147-2147  
pressestelle@brk.nrw.de

Public relations: Gudrun Eder-Sievers  
phone: + 49 221 147-4362  
oeffentlichkeitsarbeit@brk.nrw.de



**Cologne Government Regional Office**  
**Bezirksregierung Köln**  
Zeughausstraße 2–10  
50667 Köln  
phone: + 49 221 147-0  
fax: + 49 221 147-3185  
poststelle@brk.nrw.de  
www.brk.nrw.de



## Thinking Geospatially. Taking Practical Decisions. Division 7: A Brief Outline



## Geo-Products – a Key Contribution

Division 7 of the Cologne Government Regional Office is North Rhine-Westphalia's central service for basic geographic data and top-quality geo-products and services. Division 7 has state-wide responsibility for collecting, storing, handling and making available basic topographic geodata. Its activities are guided by the motto: Thinking geospatially. Taking practical decisions.

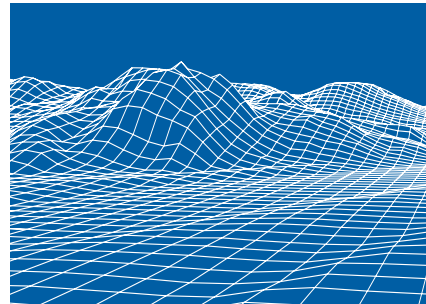
The basic geodata provided by Division 7 (coordinates, elevations, property boundaries, size and use of real estate, topographic information etc.) are needed for a wide range of purposes including planning, construction projects, transport and the supply of basic community services, nature conservation and environmental protection, valuation of real property, real estate transactions and mortgage borrowing. Against a background of rapid technological progress and changing environmental awareness, the division's services are now in demand from new sections of the community. Rather than chiefly asking for analogue data such as maps, plans and lists, users increasingly prefer digital information which they can integrate into existing databases.



## Maps, Data, Aerial Photographs, Digital Elevation Models and a Range of Other Services

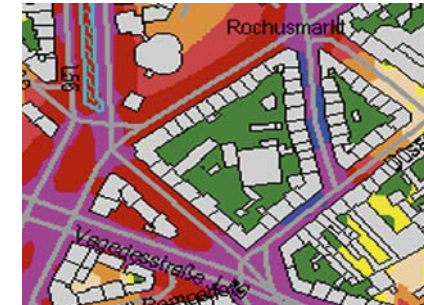
Providing basic geographic information is a government responsibility given that geodata form part of a state's infrastructure. Division 7 offers interested users high-quality up-to-date and historic aerial photographs and maps, digital elevation and terrain models plus a great variety of geo-products and services ranging from the Global Navigation Satellite System, SAPOS®, to the digital land value benchmarks information system, BORIS, which can be accessed via [www.boris.nrw.de](http://www.boris.nrw.de), and from the Topographical Information Management System, TIM-online, [www.tim-online.nrw.de](http://www.tim-online.nrw.de), to the online shop at [www.geodatenzentrum.nrw.de](http://www.geodatenzentrum.nrw.de).

As early as in the beginning of the 1990s, Germany's surveying authorities launched a nation-wide project designed to provide a digital description of Germany's surface under the official topographic and cartographic information system, ATKIS®. The result is a stock of detailed and highly accurate basic data about Germany's landscape which is continuously being updated. Supplemented with additional information, these data are available to a large number of users. In addition, the up-to-date digital data are used to produce both paper and internet maps.



Another service is SAPOS®, a global navigation satellite system which is designed for users of GPS technology for instance in the fields of cadastral and engineering surveying, agriculture and water management. Altogether, there are 27 GPS reference stations on the territory of the State of North Rhine-Westphalia and 260 in Germany. The network is capable of achieving accuracies in the order of centimetres.

Flights over North Rhine-Westphalia are undertaken to obtain topographic visual information such as aerial photographs, true-to-scale high-resolution orthophotos and aerial photo maps, while airborne laser scanning is used to generate terrain models, surface models and 3D models of buildings. In addition to being used for updating data and maps, those products also serve as efficient tools for a range of purposes including planning, emergency management and response, and noise abatement.



## Surveying of North Rhine-Westphalia - Getting a First-Hand Impression

Inspired by the socio-political debate about school curricula, Division 7 supports the introduction of the subject, „Geographic Information Systems (GIS) at School“. A specialised exhibition focussing on „200 years of land surveying in North Rhine-Westphalia“ is used to present to interested groups the complex world of surveying, topographic imagery, photogrammetric evaluation, cartography of North Rhine-Westphalia, and basic geographic data. Division 7 also organises presentations that are intended for staff of public authorities and agencies, private and public sector companies, secondary school pupils, apprentices and university students.

